

EU Declaration of Conformity

LEO
WORKWEAR



Product Type: High Visibility Women's Superior Long
Sleeved Waistcoat

Manufacturer: Leo Textiles T/A LEO WORKWEAR

Product ID: SL12-Y

Name: BEAWORTHY

Model/Label: LS-026

The above product is in conformity with the PPE regulation (EU) 2016/425 and is identical to the PPE which is the subject of EU certificate ITASLNB21017540 issued by: **INTERTEK ITALIA SpA, Notified Body 2575**, Via Miglioli, 2/A – 20063 Cernusco sul Naviglio, Milano - Italy.

Relevant Harmonised Standards / Technical Specifications used to which conformity is declared:

EN ISO 20471:2013 + A1:2016 (XS-M Class 2 & L-6XL Class 3)

This declaration of conformity is issued under the sole responsibility of LEO WORKWEAR.

Signed for on behalf of LEO WORKWEAR

Name: Peter Turner

Date: 03/11/2022

Position: Director

Signature:

Leo Workwear | 1 Whiddon Drive | Barnstaple | Devon | EX32 8RY

leoworkwear.com | Tel: 01271 378904 | Fax: 01271 327887

Company registered in England no. 1553406. Registered office as above. VAT Registration No. 321166104

Leo Workwear is a Trading Style of Leo Textiles Ltd.



WOMEN’S SUPERIOR WAISTCOAT
CODE: SL12-Y-LEO

WHY THE BEAWORTHY?

A sleeved waistcoat specifically designed for a woman. A great fit combines with a host of practical storage solutions make the Beaworthy perfect for a variety of working environments



ISO 20471
CLASS 2*

XS-6XL

68-81cm
LENGTH

50
BOX
QUANTITY

TARIFF
6211421000



ID POCKET



DURABLE
POLYESTER

FEATURES

- > 100% knitted polyester
- > Grey trim
- > Zip fastener
- > Scooped sides allowing pocket access
- > 2 front bellowed multi-functional storage pockets
- > Cuff-adjuster

*Sizes XS-M certified to ISO 20471 Class 2, Sizes L-6XL certified to ISO 20471 Class 3



TAPE

Retromax® reflective tape

CARE LABEL



CERTIFIED TO 25 WASH CYCLES

SIZE	XS	S	M	L	XL	XXL	3XL	4XL	5XL	6XL
UK WOMEN’S SIZE	8	10	12	14	16	18	20	22	24	26
CHEST TO FIT (CM)	69-76	76-83	83-90	90-97	97-104	104-111	111-118	118-125	125-132	132-139

COLOUR



also available
(RIS-3279-TOM)



EU TYPE EXAMINATION CERTIFICATE



NOTIFIED BODY 2575

The PPE detailed herein meets the criteria of an EU Type Examination in accordance with Annex V, including the applicable clauses of the Essential Health and Safety Requirements of the PPE Regulation EU 2016/425, for the category II followed by conformity to type based on internal production control (module C) set out in Annex VI.

Following an EU Declaration of Product Conformity you are hereby licensed to mark the product(s) detailed in accordance with Article 17 of the PPE Regulation EU 2016/425.

VALIDITY OF CERTIFICATE

This certificate will cease its validity at any time if needed, in particular if changes in the manufacturing process, in the raw materials or in PPE components will occur.

INTERTEK ITALIA SpA
Via Miglioli, 2/A
Cernusco sul Naviglio (MI), Italy
T: +39 02 95383833
F: +39 02 95383832



PRD N° 277B

Membro degli Accordi di Mutuo Riconoscimento EA, IAF e ILAC

Signatory of EA, IAF and ILAC Mutual Recognition Agreements

Manufacturer: Leo Textiles Ltd T/A LEO WORKWEAR

Address: 1 Whiddon Drive, Barnstaple, Devon, EX32 8RY, UK

Authorised Representative: -

Address: -

Certificate No.: ITASLNB21017540

Category Product: II

Model/Product Reference: -

Article: LS-026, LS-026(R/T)

Product type: High Visibility Clothing

Reference(s) Standard: EN ISO 13688:2013, EN ISO 20471:2013+A1:2016

Description:

High Visibility long sleeve ladies waistcoat in fluorescent yellow or orange background material and retroreflective tape; Sixes XS-M - Class 2 minimum areas of fluorescent background material and retroreflective tape; Sizes L-6XL - Class 3 minimum areas of fluorescent background material and retroreflective tape; Retroreflective Tape - Two bands encircling the torso, one band over each shoulder and two bands encircling each sleeve.

This has been shown through satisfactory testing to: EN ISO 13688:2013, EN ISO 20471:2013+A1:2016, RIS-3279-TOM issue2:2019 (orange only)

Examination of the Technical File Documentation, No: GARMENT SPECIFICATION LS-026, LS-026 (R/T) - Rev.2 24/08/2022

Test Report no. See Technical File

Remark:

Note:

Issue Date 02/11/2022

Expiry Date 01/11/2027

Issued at: Lastra a Signa (FI)

General Manager Elena Ruffino

For and on behalf of INTERTEK ITALIA Spa



This Certificate is for the exclusive use of Intertek's client and is provided pursuant to the agreement between Intertek and its Client. Intertek's responsibility and liability are limited to the terms and conditions of the agreement. Intertek assumes no liability to any party, other than to the Client in accordance with the agreement, for any loss, expense or damage occasioned by the use of this Certificate. Only the Client is authorized to permit copying or distribution of this Certificate and then only in its entirety. Any use of the Intertek name or one of its marks for the sale or advertisement of the tested material, product or service must first be approved in writing by Intertek.

Intertek Italia S.p.A. Via Miglioli, 2/A - 20063 Cernusco sul Naviglio, Milano - Italy

UKCA Declaration of Conformity

LEO
WORKWEAR



Product Type: High Visibility Women's Long-sleeved
Waistcoat
Manufacturer: Leo Textiles T/A LEO WORKWEAR
Product ID: SL12-Y
Name: BEAWORTHY
Model/Label: LS-026

The above product is in conformity with the PPE regulation 2016/425 as it applies in GB as brought into UK Law and amended (Legislation UK 2019 S1696 Schedule 35 Regulation 38), and is identical to the PPE which is subject of UKCA certificate LECFI00384307 issued by **ITS Testing Services UK Ltd, Approved Body AB0362**, Centre Court, Meridian Business Park, Leicester, LE19 1WD, United Kingdom.

Relevant Harmonised Standards / Technical Specifications used to which conformity is declared:

EN ISO 20471:2013 + A1:2016 (XS-M Class 2 & L-6XL Class 3).

This declaration of conformity is issued under the sole responsibility of LEO WORKWEAR.

Signed for on behalf of LEO WORKWEAR

Name: Peter Turner

Date: 12/10/2022

Position: Director

Signature:



Leo Workwear | 1 Whiddon Drive | Barnstaple | Devon | EX32 8RY

leoworkwear.com | Tel: 01271 378904 | Fax: 01271 327887

Company registered in England no. 1553406. Registered office as above. VAT Registration No. 321166104

Leo Workwear is a Trading Style of Leo Textiles Ltd.



USER INFORMATION SHEET



The following garments comply with the requirements of PPE Regulation (EU) 2016/425 and Regulation 2016/425 on personal protective equipment, as amended to apply in GB and the following standards - BS EN 13688: 2013 + A1: 2021 and BS EN ISO 20471: 2013 + A1: 2016 using conforming retroreflection performance material and Fluorescent Yellow or Orange background material. Orange fabric complies to rail industry standard RIS-3279-TOM Issue 2: 2019.



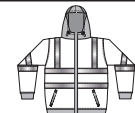
The Declaration of Conformance for this item is available from: leoworkwear.com or by contacting Leo Workwear at the address below.



Style: SS-001, SS-001 (R/T)

Description: High visibility recycled sweatshirt

BS EN ISO 20471: 2013 + A1: 2016 Class 3 areas of visible background and retroreflective tape. Two bands of retroreflective material encircling the torso and sleeves, one band over each shoulder.



Style: SS-002, SS-002 (R/T)

Description: High visibility recycled sweatshirt

BS EN ISO 20471: 2013 + A1: 2016 Class 3 areas of visible background and retroreflective tape. Two bands of retroreflective material encircling the torso and sleeves, one band over each shoulder.



Style: SS-008, SS-008 (R/T)

Description: High visibility recycled dual colour sweatshirt

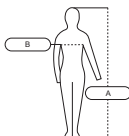
BS EN ISO 20471: 2013 + A1: 2016 Class 2 areas of visible background and retroreflective tape. Two bands of retroreflective material encircling the torso and sleeves, one band over each shoulder.

Badge information: SS-001 (R/T), SS-002 (R/T) & SS-008 (R/T) to RIS-3279-TOM Issue 2: 2019

Restricted to company or project name and logo that identify who an individual is working for and titles or designations associated with the management of incidents: Press Officer, Recovery Engineer, First Aider, Train Operators' Liaison Officer (TOLO).

	A	B
Small	156 - 204	86 - 94
Medium	156 - 204	94 - 102
Large	156 - 204	102 - 110
XL	156 - 204	110 - 118
XXL	156 - 204	118 - 126
3XL	156 - 204	126 - 134
4XL	156 - 204	134 - 142
5XL	156 - 204	142 - 150
6XL	156 - 204	150 - 158

Garment fit:
Fit according to chest size:



BS EN ISO 20471 Minimum required areas of visible material in m²

Garment class	3	2	1
Background material	0.8	0.5	0.14
Retroreflective material	0.2	0.13	0.1
Combined performance material	-	-	0.2



X = Class of garment
3 highest, 1 lowest

BS EN ISO 20471: 2013 + A1: 2016

Measurements in centimetres

Limitations of use, warning of misuse:

Garments must be worn outside of trousers to maintain visualisation of maximum area of required high visibility. Garments must be worn fastened. Should the high visibility properties of garments become seriously impaired the item should be replaced.

Storage: Garments should be stored and transported in clean, dry conditions. DO NOT store in areas subject to direct sunlight.

Cleaning:



Machine wash at 40°C, do not bleach, do not dryclean, do not tumble dry, do not iron.
Maximum number of wash cycles 50.
Wash separately



The stated maximum number of cleaning cycles is not the only factor related to the lifetime of the garment. The lifetime will also depend on usage, care, storage, etc.

Recycling: Dispose of product according to local environmental guidelines.

Materials: Product incorporates:- Recycled Polyester/Cotton, Retroreflective tape

For more information, contact:

LEO WORKWEAR

1 Whiddon Drive, Barnstaple,
Devon, EX32 8RY

01271 378904

www.leoworkwear.com

UKCA Type Examination Conducted by:

BT TG Testing & Certification

Unit 6, Wheel Forge Way,
Trafford Park, Manchester

M17 1EH

Approved body: 0338

EU Type Examination Conducted by:

Shirley Technologies Europe Limited

Sky Business Centre, Unit 21, Block 1,
Port Tunnel Bus. Park, Clonsaugh Bus. & Tech. Park

Dublin 17

Notified body: 2895